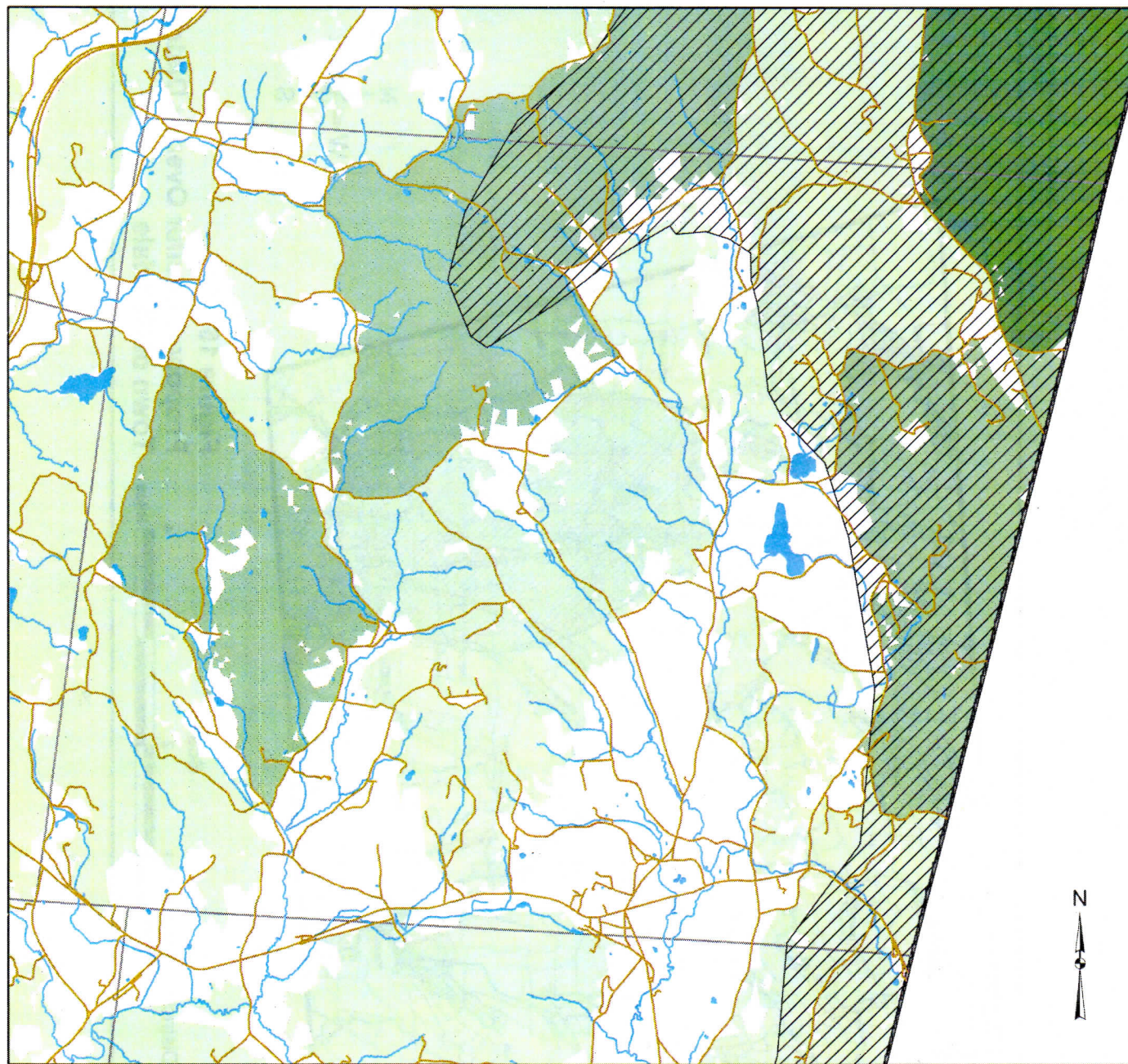


Figure 3: Large Forests (200 acres and larger) in the Town of Hillsdale, Columbia County.



Legend

- Roads
- Taconic Ridge significant biodiversity area
- Streams
- Waterbodies
- Municipal Boundaries
- County Boundaries

Forest Patch Size (Acres)

- 200 - 1999: Stepping Stone
- 2000 - 4999: Locally Significant
- 5000 - 14999: Regionally Significant
- 15000+: Globally Significant

0 0.9 1.8 Miles

This map shows continuous forested patches of New York State by acreage for the Town of Hillsdale, Columbia County. It was created using the National Land Cover Database to identify forest cover and buffered roads were used to identify forest patches. This map was produced as part of a habitat summary for the town. For more information, please contact NYSDEC's Hudson River Estuary Biodiversity Outreach Coordinator Karen Strong at (518) 402-8878.
Data Sources: EPA 2001 Multi-Resolution Land Characteristics dataset
 New York State Department of Environmental Conservation
 New York State Office of Cyber Security and Critical Infrastructure Coordination



Cornell University

Map Created 26 October 2010